



SUBMITTAL

BDT-SERIES

BOILER BLOWDOWN TANKS

Models: BDT-21 thru BDT-606

Submittal Sheet No. BDT-2016A

Date: 4/20

Job Name _____	Submitted By _____	Date _____
Location _____	Approved By _____	Date _____
_____	Order No. _____	Date _____
Engineer _____	Notes _____	
Contractor _____	_____	
Sales Rep. _____	_____	

Description

AA tanks type BDT boiler blowdown tanks are designed to reduce the temperature and pressure of blowdown discharge from the boiler. This equipment is essential because it avoids discharging the boiler blowdown directly to a sanitary sewer.

Construction

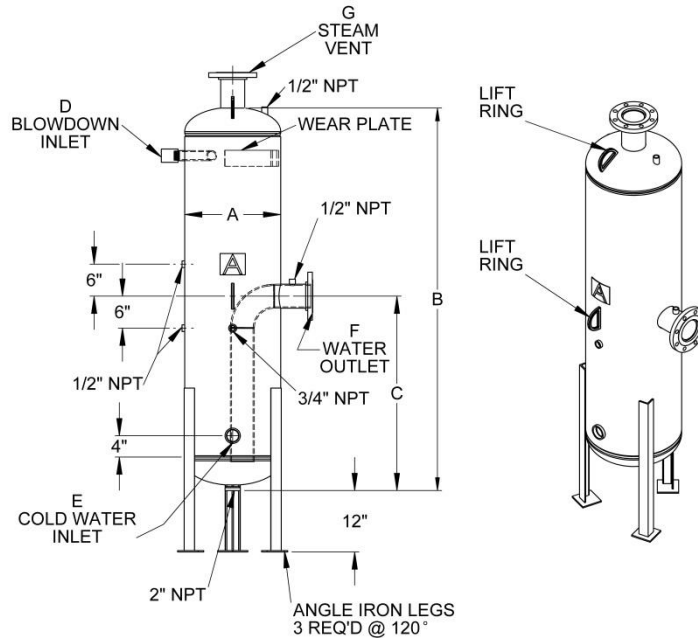
Carbon Steel - 3/8" minimum thickness
Exterior: Primer Painted

Performance Limitations

Maximum Design Temperature: 450°F
Maximum Design Pressure: 125 psi

*200 & 250 PSIG available

Model Number	Part Number	Tagging Information	Quantity
BDT-			



Typical Specification

Furnish and install, as shown on plans, a _____" diameter X _____" high blowdown tank. The tank shall be fitted with a tangential blowdown inlet with wear plate, water over flow outlet, and atmospheric steam vent. NPT Connections are to be provided for the installation of a pressure gauge, thermometer, level gauge, clean out drain, and cold water inlet. The tank must be constructed in accordance with the most recent addendum of Section VIII Division 1 of the ASME Boiler and Pressure Vessel Code.

Each tank shall be AA tanks model number BDT-_____ or approved equal.

25110 THOMAS DR • WARREN, MI 48091 • (586) 427-7700 • (586) 427-7895 FAX • www.aatanks.com



Dimensions & Weights

Model Number	Part Number	Boiler Design Pressure	Dimensions in Inches						
			Diameter "A"	Height "B"	Outlet Height "C"	Blowdown "D"	Cold Water Inlet "E"	Water Outlet "F"	Steam Vent "G"
BDT-21	52010021	1 to 50	14	66	33	3/4	3/4	1 1/2	2
BDT-22	52010022					1	1		
BDT-23	52010023					1 1/4	1 1/4		
BDT-24	52010024		1 1/2	1 1/2	36	2	2	4	2 1/2
BDT-25	52010025		18	72					2
BDT-26	52010026		20		4				
BDT-51	52010051	51 to 100	14	66	33	3/4	1	1 1/2	2
BDT-52	52010052					1	1 1/4	2	2 1/2
BDT-53	52010053					1 1/4	1 1/2	3	3
BDT-54	52010054		18	72	36	1 1/2	2	4	4
BDT-55	52010055					2	2 1/2		5
BDT-56	52010056		24	78	39	2 1/2		5	6
BDT-101	52010101	30	4						
BDT-102	52010102	101 to 150	14	66	33	3/4	1	2	2 1/2
BDT-103	52010103					1	1 1/4	3	3
BDT-104	52010104		20	72	36	1 1/4	1 1/2		4
BDT-151	52010151		24			1 1/2	2	4	5
BDT-152	52010152	151 to 200	14	66	33	0.75	1	2	3
BDT-153	52010153					1	1 1/4	2 1/2	4
BDT-154	52010154		18	72	36	1 1/4	2	3	5
BDT-155	52010155		24			1 1/2		4	6
BDT-156	52010156		30	78	39	1 1/2	3	5	8
BDT-201	52010201	48	2 1/2			6	10		
BDT-202	52010202	201 to 300	18	72	34	3/4	1 1/4	2	4
BDT-203	52010203					1	1 1/2	2 1/2	5
BDT-204	52010204		24	78	39	1 1/4	2	4	6
BDT-205	52010205		36			1 1/2	2 1/2		
BDT-206	52010206		48	84	42	2	3	5	8
BDT-301	52010301		54			2 1/2		6	10
BDT-302	52010302	301 to 400	20	72	36	3/4	1 1/4	2 1/2	4
BDT-303	52010303					1	1 1/2	3	5
BDT-304	52010304		24	78	39	1 1/2	2 1/2	4	8
BDT-305	52010305		42			2	3	5	10
BDT-306	52010306		54	84	42	2 1/2	4	6	
BDT-401	52010401	401 to 500	20	72	36	1 1/4	1 1/4	2 1/2	4
BDT-402	52010402		24	78	39	1 1/2	2 1/2	4	8
BDT-403	52010403		42			84	42	2	3
BDT-404	52010404		48	2 1/2	4			8	12
BDT-405	52010405		60	84	42	2	3	5	10
BDT-406	52010406	72	2 1/2			4	8	12	
BDT-501	52010501	501 to 600	24	72	36	3/4	1 1/4	2 1/2	5
BDT-502	52010502		30	78	39	1	1 1/2	3	6
BDT-503	52010503		42			1 1/4	2 1/2	4	8
BDT-504	52010504		54	84	42	1 1/2		3	5
BDT-505	52010505		66			2	6		12
BDT-506	52010506		72	2 1/2	4	8			
BDT-602	52010602	601 to 800	36	78	39	1	1 1/2	3	6
BDT-603	52010603		48			1 1/4	2	4	8
BDT-604	52010604		60	84	42	1 1/2	2 1/2	5	10
BDT-605	52010605		72			2	3	6	12
BDT-606	52010606		72	2 1/2	4	8			

Note: The inlet "D" should be the same as blowoff valve.

25110 THOMAS DR • WARREN, MI 48091 • (586) 427-7700 • (586) 427-7895 FAX • www.aatanks.com