



SUBMITTAL

SPA-SERIES
AIR SEPARATOR

Models: SPA-2 thru SPA-24

Submittal Sheet No. SPA-2016A

Date: 4/20

| | | |
|------------------|--------------------|------------|
| Job Name _____ | Submitted By _____ | Date _____ |
| Location _____ | Approved By _____ | Date _____ |
| _____ | Order No. _____ | Date _____ |
| Engineer _____ | Notes _____ | |
| Contractor _____ | _____ | |
| Sales Rep. _____ | _____ | |

Description

AA tanks SPA ASME Vortex type Air Separators eliminate air quickly and efficiently from open and closed loop heating/cooling systems. Water enters and exits through unique “tangential” connections, which promote a low velocity swirling effect in the center of the unit. Natural centrifugal forces allow the heavier air-free water to move toward the outer edges while entrained air is captured within the “eye” of the vortex and released out of the top of the separator. The bubble-free water then exits near the bottom of the unit, protecting the systems against the noise, corrosion, and damage commonly caused by entrained air.

Construction

Shell: Carbon Steel
 Heads: Carbon Steel
 (Available in 304 / 316 Stainless Steel)
 Exterior: Primer Painted

Performance Limitations

Maximum Design Temperature: 450°F
 Maximum Design Pressure: 125 PSIG*
 *200 & 250 PSIG available



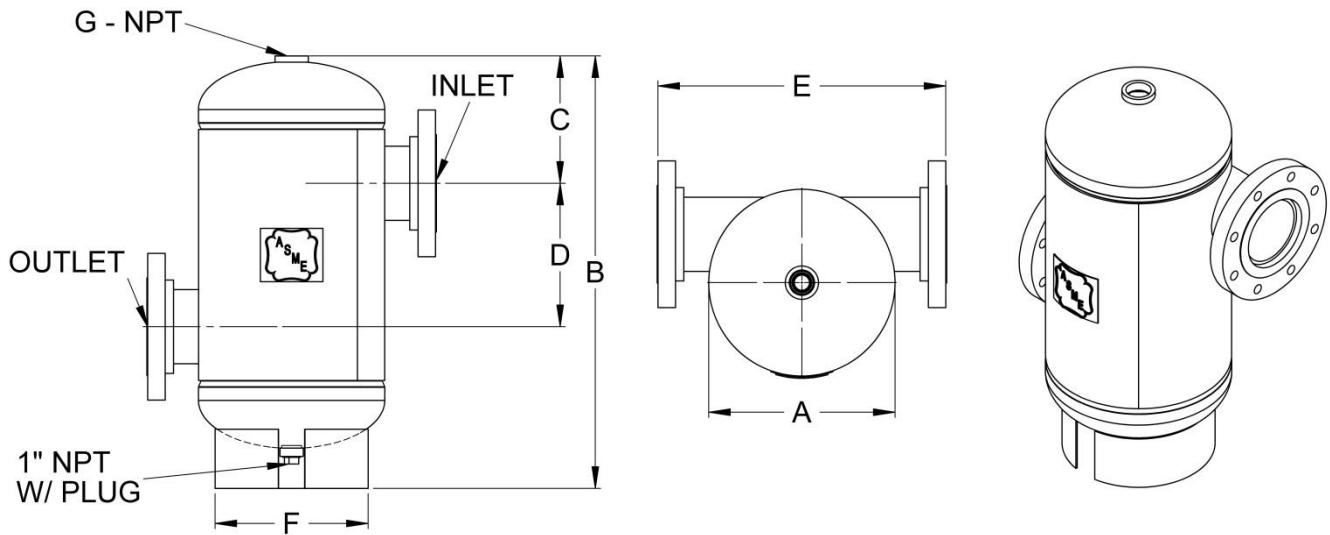
| Model Number | Part Number | Max Flow (GPM) | Tagging Information | Quantity |
|--------------|-------------|----------------|---------------------|----------|
| SPA-2 | 72006019 | 56 | | |
| SPA-2.5 | 72006025 | 90 | | |
| SPA-3 | 72006030 | 190 | | |
| SPA-4 | 72006035 | 300 | | |
| SPA-5 | 72016036 | 530 | | |
| SPA-6 | 72001060 | 850 | | |
| SPA-8 | 72016080 | 1900 | | |
| SPA-10 | 72030010 | 3200 | | |
| SPA-12 | 72030012 | 4800 | | |
| SPA-14 | 72072014 | 6100 | | |
| SPA-16 | 72072016 | 8000 | | |
| SPA-18 | 72072018 | 9700 | | |
| SPA-20 | 72072020 | 12000 | | |
| SPA-22 | 72072022 | 15000 | | |
| SPA-24 | 72072024 | 17000 | | |

Typical Specification

Furnish and install, as shown on plans, a vortex type air separator model SPA _____ sized for _____ GPM, with _____” (NPT/Flanged) tangential connections, as manufactured by AA tanks Company. A blowdown connection shall be provided to facilitate routine cleaning of the unit. The tank must be constructed in accordance with most recent addendum of Section VIII Division 1 of the ASME Boiler and Pressure Vessel Code, and shall be constructed and stamped for 125 PSI working pressure @ 450°F.

Each air separator shall be AA tanks model number SPA-_____ or approved equal.

25110 THOMAS DR • WARREN, MI 48091 • (586) 427-7700 • (586) 427-7895 FAX • www.aatanks.com



SPA-2 thru SPA-24

Dimensions & Weights

| Model Number | Dimensions in Inches | | | | | | | | Approx. Shipping Wt (lbs) |
|--------------|----------------------|----|--------|--------|--------|--------|-------|-------|---------------------------|
| | Connection Size | A | B | C | D | E | F | G | |
| SPA-2 | 2 NPT | 12 | 22 1/2 | 5 1/2 | 8 1/2 | 16 5/8 | 9 1/2 | 1 1/4 | 34 |
| SPA-2.5 | 2.5 NPT | | 25 | 6 1/4 | 8 | 19 3/4 | | | 37 |
| SPA-3 | 3 | | 32 | 9 1/8 | 10 3/4 | 21 3/4 | | | 45 |
| SPA-4 | 4 | 14 | 44 | 13 1/4 | 14 1/2 | 28 | 18 | 1 1/2 | 80 |
| SPA-5 | 5 | | 60 1/2 | 19 | 20 | 41 | | | 125 |
| SPA-6 | 6 | 20 | 78 | 22 | 31 1/2 | 46 3/8 | 30 | 2 | 175 |
| SPA-8 | 8 | | 108 | 30 | 40 | 60 | | | 210 |
| SPA-10 | 10 | | 124 | 33 | 50 | 66 | | | 460 |
| SPA-12 | 12 | 30 | 138 | 35 | 60 | 72 | 50 | 56 | 577 |
| SPA-14 | 14 | | 150 | 38 | 66 | 78 | | | 850 |
| SPA-16 | 16 | | 150 | 38 | 66 | 80 | | | 1858 |
| SPA-18 | 18 | 66 | 124 | 33 | 50 | 66 | 44 | 2490 | 2490 |
| SPA-20 | 20 | | 138 | 35 | 60 | 72 | | | 3346 |
| SPA-22 | 22 | | 150 | 38 | 66 | 78 | | | 3879 |
| SPA-24 | 24 | 66 | 150 | 38 | 66 | 80 | 56 | 4211 | |

Notes

- Available with mounting clips.