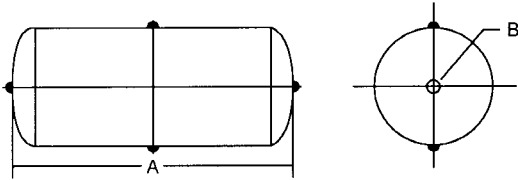


Stainless Steel Pressure and Vacuum Tanks

125, 200 and 250 PSI Working Pressure Stainless Steel Tanks

- Rated for full vacuum service, 125, 200 and 250 psi pressures
- Additional or revised NPT fittings located per your specifications
- Vertical mount bases or legs for horizontal mounting available
- Most sizes available from stock in 304 stainless, with 316 stainless optional
- ASME code built to order

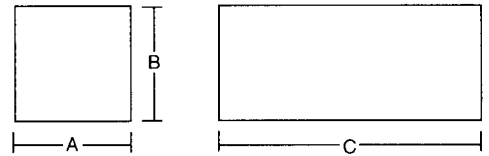


Dimensions (in inches)

Part Number	Capacity (in gallons)	Working Pressure (PSI)		Dimensions (in inches)		
		125	250	Diameter	A Length	B NPT Fitting
SSP926	8.3	125	250	9 $\frac{3}{4}$	26	$\frac{3}{4}$
SSP938	12	125	250	9 $\frac{3}{4}$	38	$\frac{3}{4}$
SSP950	15.8	125	250	9 $\frac{3}{4}$	50	$\frac{3}{4}$
SSP962	19.7	125	250	9 $\frac{3}{4}$	62	$\frac{3}{4}$
SSP964	23.5	125	250	9 $\frac{3}{4}$	74	$\frac{3}{4}$
SSP1224	12.5	125	250	12	24	1
SSP1238	18.6	125	250	12	38	1
SSP1250	24.5	125	250	12	50	1
SSP1262	30	125	250	12	62	1
SSP1274	36	125	250	12	74	1
SSP1427	19.6	125	250	14 $\frac{3}{8}$	27	1
SSP1434	28	125	250	14 $\frac{3}{8}$	34	1
SSP1451	37	125	250	14 $\frac{3}{8}$	51	1
SSP1463	45.5	125	250	14 $\frac{3}{8}$	63	1
SSP1475	54.5	125	250	14 $\frac{3}{8}$	75	1
SSP1828	30	125	250	18	28	1 $\frac{1}{2}$
SSP1840	43	125	250	18	40	1 $\frac{1}{2}$
SSP1852	56	125	250	18	52	1 $\frac{1}{2}$
SSP1864	70	125	250	18	64	1 $\frac{1}{2}$
SSP1876	82	125	250	18	76	1 $\frac{1}{2}$
SSP2229	45	125	250	22	29	1 $\frac{1}{2}$
SSP2241	64	125	250	22	41	1 $\frac{1}{2}$
SSP2253	82	125	250	22	53	1 $\frac{1}{2}$
SSP2265	102	125	250	22	65	1 $\frac{1}{2}$
SSP2276	122	125	250	22	76	1 $\frac{1}{2}$
SSP3062	160	125	250	30	62	1 $\frac{1}{2}$
SSP3074	210	125	250	30	74	1 $\frac{1}{2}$
SSP3686	365	125	250	36	86	2

Stainless Steel Rectangular Storage Tanks

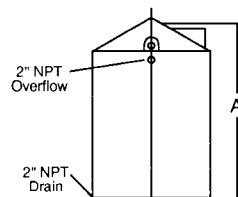
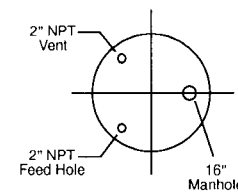
- Optional LID arrangements such as bracing, hinges, etc.



A Width (in inches)	B Height (in inches)	C Length (in inches)	Dimensions (in inches)						
			24	46	58	70	94	118	142
23	23	Gallons	55	—	—	—	—	—	—
			Pounds	60	—	—	—	—	—
23	47 $\frac{1}{4}$	Gallons	114	218	275	332	446	560	674
			Pounds	100	155	185	230	290	345
23	59 $\frac{1}{4}$	Gallons	140	276	348	420	564	708	852
			Pounds	120	185	215	260	325	400
29	59 $\frac{1}{4}$	Gallons	177	339	427	516	693	870	1047
			Pounds	140	210	250	290	375	460
34-36	59 $\frac{1}{4}$	Gallons	209	400	505	610	818	1028	1237
			Pounds	150	228	270	315	405	500
46	59 $\frac{1}{4}$	Gallons	285	546	689	831	1116	1401	1686
			Pounds	186	287	326	365	450	535

Stainless Steel Vertical Storage Tanks with Cone Top—Radius Bottom

- Available in 304 or 316 stainless
- Custom sizes to your specifications



Part Number	Capacity (in gallons)	Dimensions (in inches)	
		Diameter	A
SCR5000	5,000	102	146
SCR6000	6,000	102	168
SCR8000	8,000	119	186
SCR10000	10,000	119	216

Satisfying Your Tank Requirements—From 10 to 25,000 Gallons