

AA tanks

SUBMITTAL

TYPE: GA ASME GLASSLINED STORAGE TANKS
MODELS: GA 200M TO GA 1500M

Submittal Sheet No. GA-001.2

Date: April, 2012

| | |
|--|--|
| JOB Unit Tag No. _____ Engineer _____ Contractor _____ | AAtanks Representative _____ Order No _____ Date _____ Submitted By _____ Date _____ Approved By _____ Date _____ |
|--|--|

DESCRIPTION

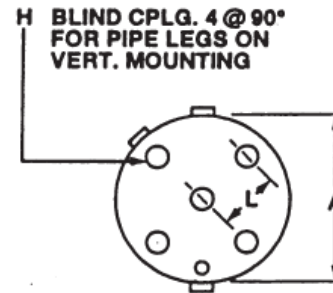
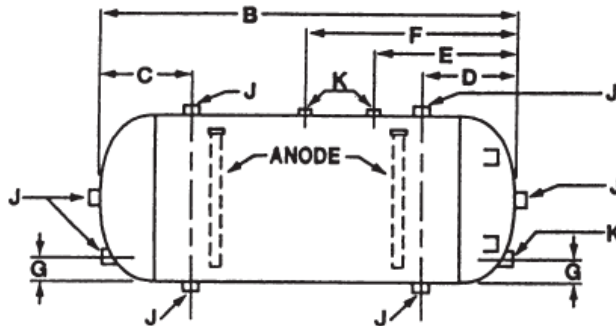
AAtanks type Glass Lined Storage Tanks are designed for optimum energy efficiency, durability and long lasting performance. The fired on glass lining makes this tank impervious to the corrosion that continually attacks storage tanks. This assures you the longest tank life possible. They are designed for hot or cold potable water up to 180°F and provided with Magnesium anode rods for longer tank life and maximum protection. They are provided with threaded leg sockets and can be installed vertically or horizontally. Each tank has a five year limited warranty.

CONSTRUCTION

Shell: Carbon Steel
 Interior: Glass Lined (5 yr. warranty)
 Anode Rods: Magnesium
 Exterior: Prime Painted
 Mounting: Vertical or Horizontal, threaded leg sockets

PERFORMANCE LIMITATIONS

Maximum Design Pressure: 125 PSIG
 Maximum Design Temperature: 180°F



DIMENSIONS & WEIGHTS

| Model Number | Tank Volume Gallons | Dimensions in Inches | | | | | | | | | | | Approx. Shipping Weight (lbs) | | |
|--------------|---------------------|----------------------|------|---------|---------|---------|---------|----|--------|--------|------|-----|-------------------------------|---------|---------|
| | | Diameter | OAH | C | D | E | F | G | H | J | K | L | | | |
| | | A | B | | | | | | | | | | | | |
| GA 200M | 200 | 30" | 71" | 13" | 13" | 19 1/2" | 28 1/2" | 4" | 2 1/2" | 2 1/2" | 3/4" | 11" | 460 | | |
| GA 350M | 350 | 36" | 86" | 14 1/2" | 14 1/2" | 21" | 30" | | | | | 3" | 3" | 3" | 13 3/8" |
| GA 400M | 400 | | 96" | | | | | | 16" | 775 | | | | | |
| GA 500M | 500 | 42" | 88" | 18" | 18" | 24 1/2" | 33 1/2" | | 4" | 3" | | 3" | 3" | 18" | 815 |
| GA 750M | 750 | | 105" | | | | | | | | | | | 19 3/4" | 19 3/4" |
| GA 1000M | 1000 | 48" | 136" | 19 3/4" | 19 3/4" | -- | 26 3/4" | | 4" | 4" | | 4" | 4" | 20" | 1655 |
| GA 1250M | 1250 | | 129" | | | | | | | | | | | 2451 | |
| GA 1500M | 1500 | | 153" | | | | | | | | | | | 2810 | |

Typical Specifications

Furnish and install on the plans and described herein, a Glass Lined Storage Tank Model _____, or approved equal. All models shall have a working pressure of 125PSI and fabricated to the latest revision of the ASME Boiler and Pressure Vessel Code. The interior shall be properly prepared and sand blasted to white metal prior and shall be glass lined with an epitaxial glass crystal combining alkaline borosilicate and cobalt ferrite which has been fused to the steel base by firing at 1600 degrees Fahrenheit. The exterior shall be prime painted. Glass coating shall be continuous over the entire inner surface of the tank. Magnesium anode rods shall be provided.
 Each tank shall be AAtanks model number GA-_____ or approved equal.