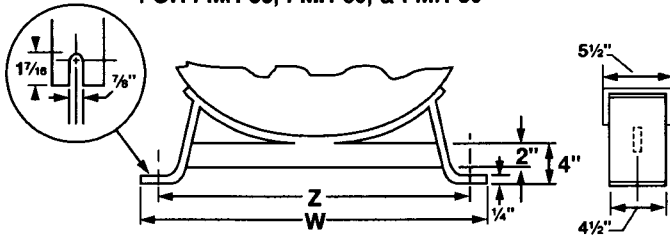


**HORIZONTAL MOUNTING  
FOR FMH-35, FMH-60, & FMH-80**



- Note:**
1. Built for 200 P.S.I. working pressure.
  2. Constructed in accordance with section VIII, Div.1 of the ASME boiler & pressure vessel code, labeled & registered.
  3. Approved automotive supplier.
  4. Exterior shop primed.

\* Dimensions A through AA are in inches.

Part No.	Cap. Cu. Ft.	Cap. Gal.	Wt. (lbs.)	A	B	C	D	E	F	G	H	J	K	L	M	N	P	R	S	T	U	V	W	Y	Z	AA
FMH-18	1	8	30	12	19	12	3	6	1	1	-	¼	-	½	-	½	3	1½	-	-	8	8	4	6	2	
FMH-38	2	17	50	12	37	30	7½	20	1	1	-	¼	-	½	-	½	3	1½	-	-	20	8	4	6	2	
FMH-50	3	22	68	14	33	25	5	15	1½	1½	-	½	-	½	-	1½	½	3	2	-	-	16	12	6	10	2
FMH-75	4	33	95	16	38	29	5½	19	1½	1½	-	½	-	½	-	1½	½	3	2	-	-	24	15¼	7½	13½	2
FMH-10	6	46	140	18	46	36	9	18	1½	1½	-	½	-	½	-	2	½	3	2	-	-	24	19	9½	16¾	2
FMH-20	11	87	230	24	49	36	9	18	1½	1½	-	½	-	½	-	2	½	4	2	-	-	24	19	9½	16¾	2
FMH-25	14	109	295	24	62	48	8½	20	1½	1½	-	½	-	½	-	2	½	4	2	-	-	36	19	9½	16¾	2
FMH-35	20	153	430	30	54	36	8	20	2	2	-	1	-	½	-	2	1	-	2	-	-	36	28	14	26	2
FMH-60	35	260	700	30	90	72	8	33	2	2	-	1	-	½	-	2	¾	-	2	-	-	60	28	14	26	-
FMH-80	46	330	1000	36	83	60	15½	30	-	2	-	-	-	¾	-	2	¾	-	2	-	-	54	32	16	28	-