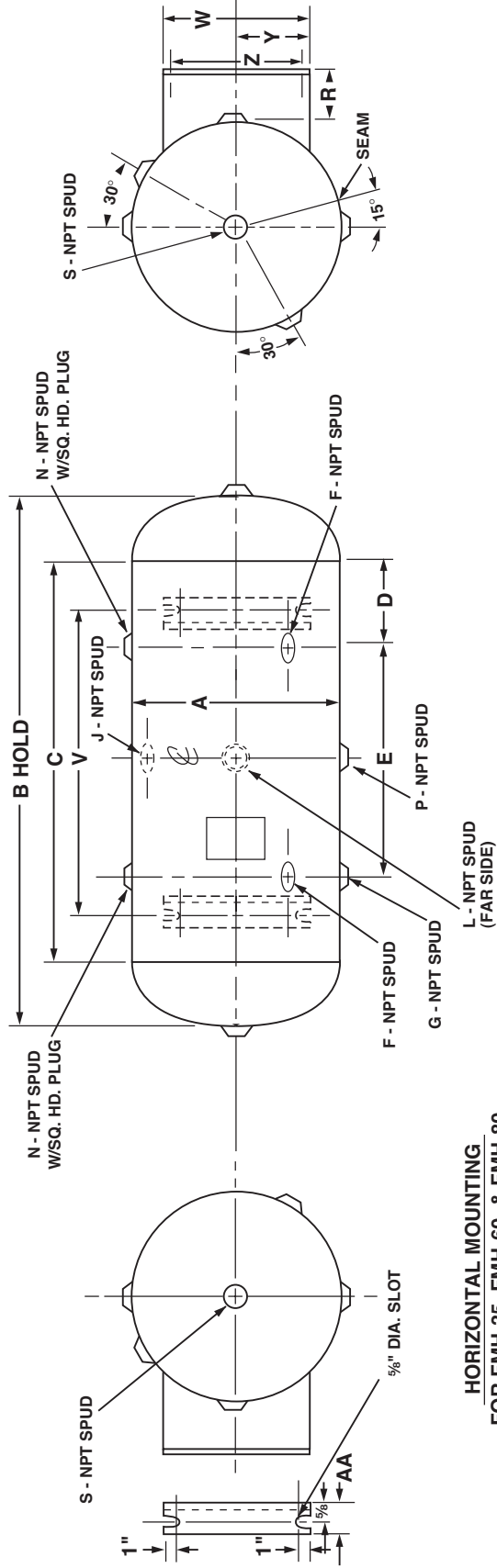


FORD APPROVED ASME 200 PSI HORIZONTAL AIR SURGE TANKS

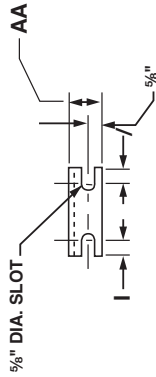
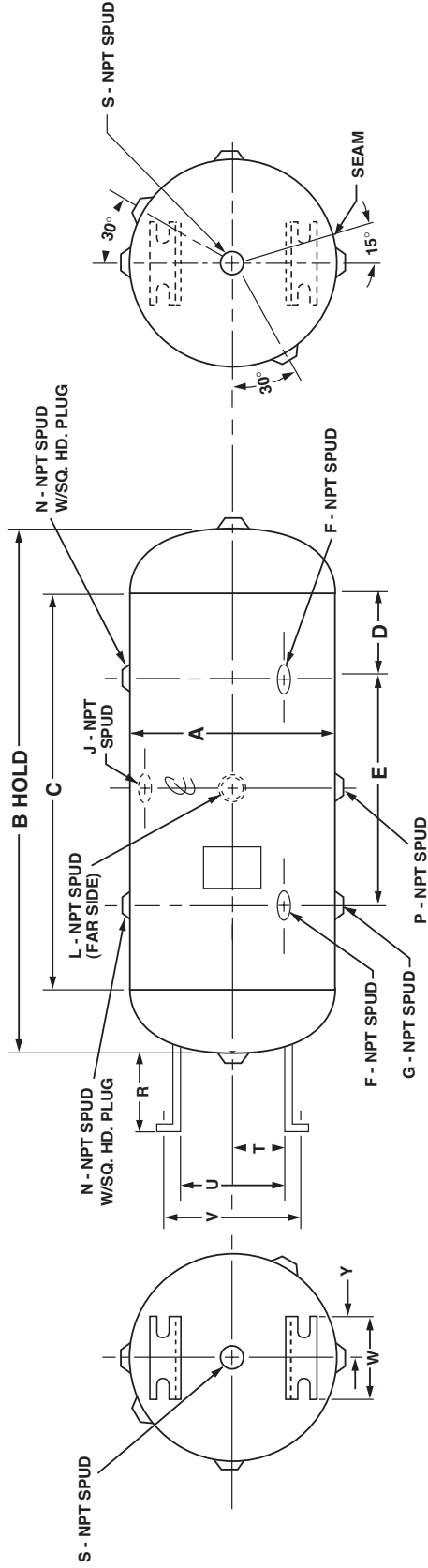


- Note:**
1. Built for 200 P.S.I. working pressure.
 2. Constructed in accordance with section VIII, Div.1 of the ASME boiler & pressure vessel code, labeled & registered.
 3. Approved automotive supplier.
 4. Exterior shop primed.

* Dimensions A through AA are in inches.

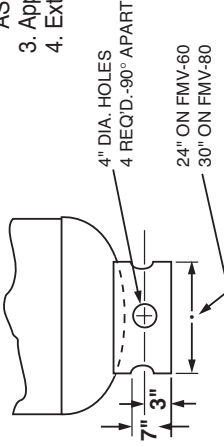
Part No.	Cap. Cu. Ft.	Cap. Gal.	Wt. (lbs.)	A	B	C	D	E	F	G	H	J	K	L	M	N	P	R	S	T	U	V	W	X	Y	Z	AA
FMH-18	1	8	30	12	19	12	3	6	1	1	-	1/4	-	1/2	-	-	1/2	3	1 1/2	-	-	8	8	4	6	2	
FMH-38	2	17	50	12	37	30	7 1/2	20	1	1	-	1/4	-	1/2	-	-	1/2	3	1 1/2	-	-	20	8	4	6	2	
FMH-50	3	22	68	14	33	25	5	15	1 1/2	1 1/2	-	1/2	-	1/2	-	1 1/2	3	2	-	-	16	12	6	10	2		
FMH-75	4	33	95	16	38	29	5 1/2	19	1 1/2	1 1/2	-	1/2	-	1/2	-	1 1/2	3	2	-	-	24	15 1/4	7 5/8	13 1/2	2		
FMH-10	6	46	140	18	46	36	9	18	1 1/2	1 1/2	-	1/2	-	1/2	-	2	3	2	-	-	24	19	9 1/2	16 3/4	2		
FMH-20	11	87	230	24	49	36	9	18	1 1/2	1 1/2	-	1/2	-	1/2	-	2	4	2	-	-	24	19	9 1/2	16 3/4	2		
FMH-25	14	109	295	24	62	48	8 1/2	20	1 1/2	1 1/2	-	1/2	-	1/2	-	2	4	2	-	-	36	19	9 1/2	16 3/4	2		
FMH-35	20	153	430	30	54	36	8	20	2	2	-	1	-	1/2	-	2	1	2	-	-	36	28	14	26	2		
FMH-60	35	260	700	30	90	72	8	33	2	2	-	1	-	1/2	-	2	3/4	2	-	-	60	28	14	26	-		
FMH-80	46	330	1000	36	83	60	15 1/2	30	-	2	-	-	-	3/4	-	2	3/4	2	-	-	54	32	16	28	-		

FORD APPROVED ASME 200 PSI VERTICAL AIR SURGE TANKS



VERTICAL MOUNTING
STANDARD SKIRT
ON FMV-60 & FMV-80

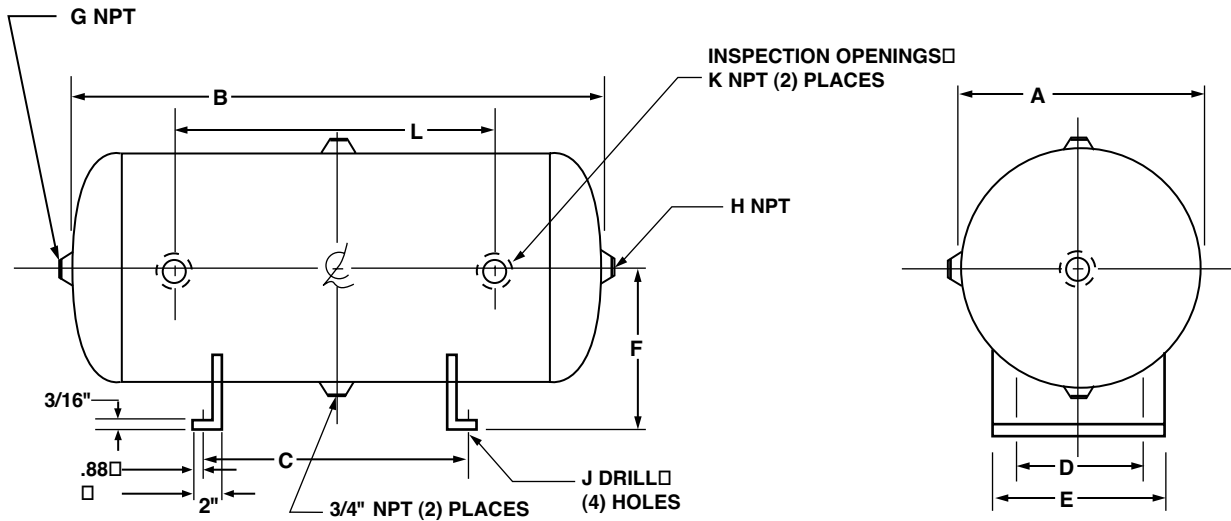
- Note:**
1. Built for 200 P.S.I. working pressure.
 2. Constructed in accordance with section VIII, Div.1 of the ASME boiler & pressure vessel code, stamped.
 3. Approved automotive supplier.
 4. Exterior shop primed.



* Dimensions A through AA are in inches.

Part No.	Cap. Cu. Ft.	Cap. Gal.	Wt. (lbs.)	A	B	C	D	E	F	G	H	J	K	L	M	N	P	R	S	T	U	V	W	Y	Z	AA
FMV-18	1	8	30	12	19	12	3	6	1	1	-	1/4	-	1/2	-	-	1/2	3	1/2	3	6	8 1/8	6	3	4	2
FMV-38	2	17	50	12	37	30	7 1/2	20	1	1	-	1/4	-	1/2	-	-	1/2	3	1 1/2	3	6	8 1/8	6	3	4	2
FMV-50	3	22	68	14	33	25	5	15	1 1/2	1 1/2	-	1/2	-	1/2	-	-	1/2	3	2	3 1/2	7	9 1/8	6	3	4	2
FMV-75	4	33	95	16	38	29	19	18	1 1/2	1 1/2	-	1/2	-	1/2	-	-	1/2	3	2	3 1/2	7	9 1/8	6	3	4	2
FMV-10	6	46	140	18	46	36	9	18	1 1/2	1 1/2	-	1/2	-	1/2	-	-	1/2	3	2	6	12	14	12	6	10	2
FMV-20	11	87	230	24	49	36	9	18	1 1/2	1 1/2	-	1/2	-	1/2	-	-	1/2	4	2	6	12	14	12	6	10	2
FMV-25	14	109	295	24	62	48	8 1/2	20	1 1/2	1 1/2	-	1/2	-	1/2	-	-	1/2	4	2	6	12	14	12	6	10	2
FMV-35	20	153	430	30	54	36	8	33	2	2	-	1	-	1/2	-	-	1	4	2	9	18	20	18	9	16	2
FMV-60	35	260	700	30	90	72	8	35	2	2	-	1	-	1/2	-	-	3/4	-	2	-	-	-	-	-	-	-
FMV-80	46	330	1000	36	83	60	16 1/2	30	-	2	-	-	-	3/4	-	-	3/4	-	2	-	-	-	-	-	-	-

CHRYSLER APPROVED ASME 200 PSI HORIZONTAL AIR SURGE TANKS



* Dimensions A through L are in inches.

Model #	Cu. Ft.	Gals.	Wt. (lbs.)	A	B	C	D	E	F	G	H	J	K	L
41-78-001-91	1	7½	28	10	25	12	5	8	6¼	1	¾	.56	1½	10
41-78-001-92	2	15	46	12	34	18	7	10	8¼	1	1	.56	1½	18
41-78-001-94	4	34	108	18	35	18	11	14	13	1½	1	.68	1½	16
41-78-001-97	7	54	138	20	44	33	13	16	14	1½	1	.68	2	24
41-78-001-98	8	60	207	24	44	24	15	18	16	2	1½	.68	2	24
41-78-001-99	14.5	109	295	24	62	42	15	18	16	2	2	.68	2	40

- Note:**
1. Built for 200 P.S.I. working pressure.
 2. Constructed in accordance with section VIII, Div.1 of the ASME boiler & pressure vessel code, stamped & approved.
 3. Approved automotive supplier.
 4. Exterior shop primed.

AA tanks

Design and engineering for OEM, industrial process and military applications. ASME, CRN, CE, USCG and ABS specifications. Most materials, linings and coatings available. Large stock of standard sizes. Special sizes and types fabricated to 20,000 gallons and 1,000 psi.

HEADQUARTERS: AA tanks · 24356 Sherwood Ave. · Center Line, MI 48015
586-427-7700 · Fax 586-427-7895 · E-mail: jmp@aatanks.com · www.aatanks.com