



SUBMITTAL

TYPE: ASME GLASSLINED STORAGE TANKS

MODELS: GA 200M TO GA 1500M

Submittal Sheet No. G-3010

Date 9-06

JOB

AA tanks Representative _____

Unit Tag No. _____

Order No. _____ Date _____

Engineer _____

Submitted By _____ Date _____

Contractor _____

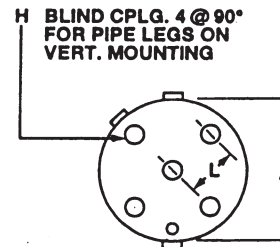
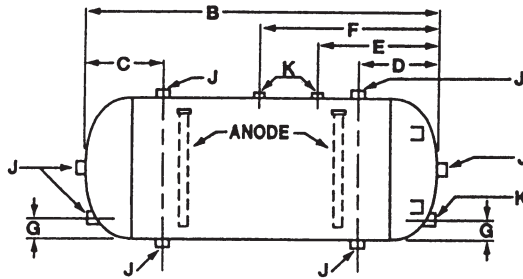
Approved By _____ Date _____

DESCRIPTION

AA tanks ASME Glass lined storage tanks are preferred for storage of hot or cold potable water. AA tanks lining provides a durable interior surface to with stand the wearing effects of high volume and high temperature water. Designed for use in temperatures up to 180°F

FEATURES

- Glass Lined Interior (5 yr. warranty)
- Magnesium Anode Rods
- Vertical or Horizontal Installation
- Threaded Leg Sockets on all Models
- Prime Painted Exterior
- Skidded for Shipment



ASME CONSTRUCTION

| MODEL NUMBER | GAL. CAP. | PSI W.P. | DIMENSIONS (in inches) | | | | | | | | | | | SHIPPING WEIGHT |
|--------------|-----------|----------|------------------------|-----|--------|--------|--------|--------|---|-------|-------|-----|--------|-----------------|
| | | | A | B | C | D | E | F | G | H | J | K | L | |
| GA 200M | 200 | 125 | 30 | 72 | 13 | 13 | 19 1/2 | 28 1/2 | 4 | 2 1/2 | 2 1/2 | 3/4 | 11 | 421 |
| GA 350M | 350 | 125 | 36 | 87 | 14 1/2 | 14 1/2 | 21 | 30 | 4 | 2 1/2 | 2 1/2 | 3/4 | 13 3/8 | 618 |
| GA 400M | 400 | 125 | 36 | 92 | 14 1/2 | 14 1/2 | 21 | 30 | 4 | 2 1/2 | 2 1/2 | 3/4 | 13 3/8 | 658 |
| GA 500M | 500 | 125 | 42 | 88 | 18 | 18 | 24 | 52 | 4 | 3 | 3 | 3/4 | 15 1/4 | 865 |
| GA 750M | 750 | 125 | 48 | 105 | 19 3/4 | 19 3/4 | - | 26 3/4 | 4 | 3 | 3 | 3/4 | 16 | 1287 |
| GA 1000M | 1000 | 125 | 48 | 138 | 19 3/4 | 19 3/4 | - | 26 3/4 | 4 | 3 | 3 | 3/4 | 20 | 1655 |
| GA 1250M | 1250 | 125 | 54 | 129 | 19 3/4 | 19 3/4 | - | 26 3/4 | 4 | 4 | 3 | 3/4 | 20 | 2451 |
| GA 1500M | 1500 | 125 | 54 | 153 | 19 3/4 | 19 3/4 | - | 26 3/4 | 4 | 4 | 3 | 3/4 | 20 | 2810 |

TYPICAL SPECIFICATIONS

Furnish and install on the plans and described herein, a Glass Lined Storage Tank Model _____, or approved equal. All models shall have a working pressure of 125 PSI and fabricated to the latest revision of the ASME Boiler and Pressure Vessel Code. The interior shall be properly prepared and sand blasted to white metal prior and shall be glass lined with an epitaxial glass crystal combining alkaline borosilicate and cobalt ferrite which has been fused to the steel base by firing at 1600 degrees Fahrenheit. The exterior shall be primed painted. Glass coating shall be continuous over the entire inner surface of the tank. Magnesium anode rods shall be provided.

24356 SHERWOOD • CENTER LINE, MI 48015 • (586) 427-7700 • (586) 427-7895 FAX • www.aatanks.com